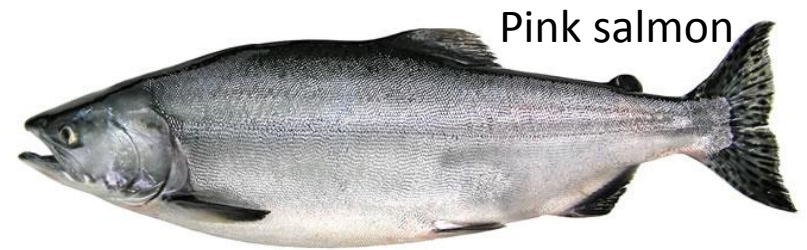


# Dichotomous Key to Pacific Salmon Identification

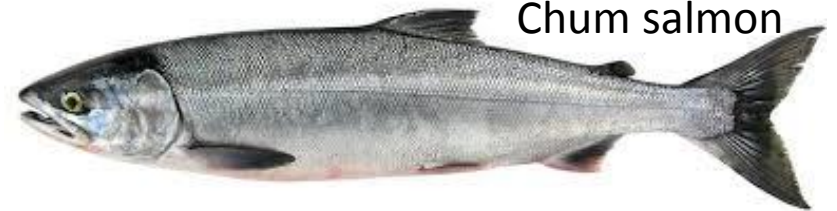
From Pacific Fishes of Canada  
(Bulletin 180) 1973

## KEY TO THE SALMONIDAE

- 1 Rays in anal fin 8 to 12 ..... 2  
 or 1 Rays in anal fin 13 to 19 ..... Genus *Oncorhynchus* 6
- 2 Teeth on head of vomer only; spots on body red or yellow (spots may be faint in specimens from salt water); mouth large .....  
 ..... *Salvelinus malma*, Dolly Varden trout, p. 134
- or 2 Teeth on both head and shaft of vomer (weak or deciduous on shaft in *Salmo salar*); large dark spots on body (which may be obscure in specimens from salt water) ..... Genus *Salmo* 3
- 3 Dark spots on side of fish limited to above midside; few if any spots on tail, if present not in radial series, unlikely to be encountered .....  
 ..... *Salmo salar*, Atlantic salmon, p. 131
- or 3 Dark spots on side of fish both above and below midside ..... 4
- 4 Spots large (about half pupil radius) and tending to be angular; many spots surrounded by a pale halo ..... *Salmo trutta*, Brown trout, p. 133
- or 4 Spots usually smaller and not surrounded by a pale halo ..... 5
- 5 Teeth present on back of tongue; red marks (often pale or disappearing) below and parallel to jaws .....  
 ..... *Salmo clarki clarki*, Coastal cutthroat trout, p. 127
- or 5 No teeth on back of tongue; no red marks under jaws; red bars on sides of males at spawning ..... *Salmo gairdneri*, Rainbow trout, p. 128
- 6 Black spots on back and caudal fin ..... 8
- or 6 No large black spots on caudal fin, fine black speckling usually present ..... 7
- 7 Rakers on first gill arch 19 to 26, stout, short, smooth, and widely spaced .....  
 ..... *Oncorhynchus keta*, Chum salmon, p. 112
- or 7 Rakers on first gill arch 30 to 39, long, slender, rough, and close set .....  
 ..... *Oncorhynchus nerka*, Sockeye salmon, p. 118
- 8 Spots on back and caudal fin large; scales small, 170 or more in first row above lateral line ..... *Oncorhynchus gorbuscha*, Pink salmon, p. 108
- or 8 Spots on back and caudal fin small and irregular; scales moderate in size, 155 or fewer in first row above lateral line ..... 9
- 9 Black spots on caudal fin on upper lobe only; light pigment along bases of teeth; pyloric caeca fewer than 100 .....  
 ..... *Oncorhynchus kisutch*, Coho salmon, p. 115
- or 9 Black spots on both lobes of caudal fin; black pigment along bases of teeth; pyloric caeca 120 or more .....  
 ..... *Oncorhynchus tshawytscha*, Chinook salmon, p. 124



Pink salmon



Chum salmon



Coho salmon



King salmon

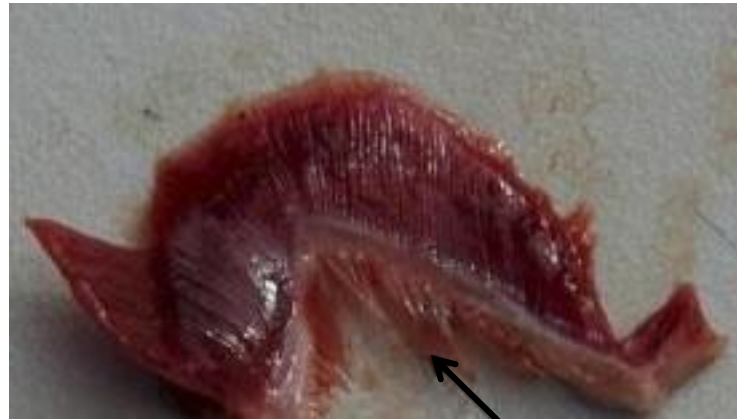
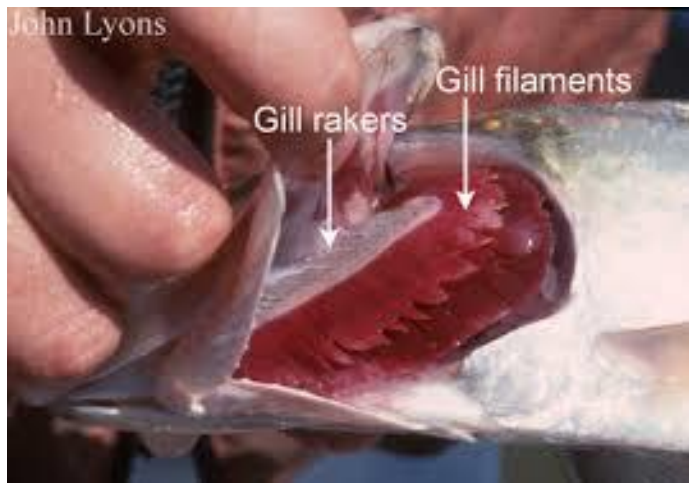


Sockeye salmon

# Gill rakers for the key



Chum salmon with coarse gill rakers



Sockeye salmon with fine gill rakers